



AVK Australia Holding Pty Ltd

PRODUCT APPRAISAL REPORT 1707 Issue 9

Sureflow® Resilient Seated Gate Valves

AS 2638.2:2011 Gate valves for waterworks purposes – Resilient seated

Issue 1 Published: 11 April 2017

Issue 2 Published: 1 May 2017

Issue 3 Published: 13 June 2017

Issue 4 Published: 12 April 2018

Issue 5 Published: 24 September 2018

Issue 6 Published: 16 July 2020

Issue 7 Published: 8 December 2020

Issue 8 Published: 27 April 2021

Issue 9 Published: 27 April 2022

Document History

The following information indicates the changes made to this document.

Date	Version
20 March 2017	Peer Review
11 April 2017	Issue 1 Publication
1 May 2017	Issue 2 Publication
13 June 2017	Issue 3 Publication
12 April 2018	Issue 4 Client Review
13 April 2018	Issue 4 Publication
24 September 2018	Issue 5 Publication
15 July 2020	Issue 6 Client Review
16 July 2020	Issue 6 Publication
8 December 2020	Issue 7 Client Review
8 December 2020	Issue 7 Publication
27 April 2021	Issue 8 Client Review
27 April 2021	Issue 8 Publication
21 April 2022	Issue 9 Client Review
27 April 2022	Issue 9 Publication

Peer Reviewers

Name/Title	Organisation	Date
Product Appraisal Technical Advisory Group	WSAA	11 April 2017
WSAA Expert Panel	WSAA	11 April 2018
Peter Pittard, WSAA Consultant	WSAA	17 March 2017
Carl Radford, Product Appraisal Manager	WSAA	1 May 2017
Peter Pittard, WSAA Consultant	WSAA	28 April 2017
Carl Radford, Product Appraisal Manager	WSAA	1 May 2017
Peter Pittard, WSAA Consultant	WSAA	11 April 2018
Carl Radford, Product Appraisal Manager	WSAA	13 April 2018
Peter Pittard, WSAA Consultant	WSAA	14 September 2018
Carl Radford, Product Appraisal Manager	WSAA	24 September 2018
Peter Pittard, WSAA Consultant	WSAA	14 July 2020
Carl Radford, Product Appraisal Manager	WSAA	16 July 2020
Peter Pittard, WSAA Consultant	WSAA	7 December 2020
Carl Radford, Product Appraisal Manager	WSAA	8 December 2020
Peter Pittard, WSAA Consultant	WSAA	27 April 2021
Carl Radford, Product Appraisal Manager	WSAA	27 April 2021
Peter Pittard, WSAA Consultant	WSAA	17 April 2022
Carl Radford, Product Appraisal Manager	WSAA	27 April 2022

Overview of WSAA

The Water Services Association of Australia (WSAA) is the peak industry body representing the urban water industry. Our members provide water and sewerage services to over 20 million customers in Australia and New Zealand and many of Australia's largest industrial and commercial enterprises.

Based around our vision of 'customer driven, enriching life', WSAA facilitates collaboration, knowledge sharing, networking and cooperation within the urban water industry. We are proud of the collegiate attitude of our members which has led to industry-wide approaches to national water issues.

WSAA can demonstrate success in the standardisation of industry performance monitoring and benchmarking, as well as many research outcomes of national significance. The WSAA Executive retains strong links with policy makers and legislative bodies and their influencers, to monitor emerging issues of importance to the urban water industry.

WSAA was formed in 1995 as a non-profit organisation to foster the exchange of information between industry, government and the community, and to promote sustainable water resource management.

The urban water industry is committed to anchoring its services to customers' values, and to enrich communities where water services have broad economic, environmental and social values. In line with this our main activities focus on four areas:

1. influencing national and state policies on the provision of urban water services and sustainable water resource management
2. promoting debate on environmentally sustainable development and management of water resources and the community health requirements of public water supplies
3. improving industry performance and establishing benchmarks and industry leading practices for water service processes; and
4. fostering the exchange of information on education, training, research, water and wastewater management and treatment and other matters of common interest.

Copyright

This document is copyrighted. Apart from any use as permitted under the Copyright Act 1968, no part of this document may be reproduced or transmitted in any form or by any means, electronically or mechanical, for any purpose, without the express written permission of Water Services Association of Australia Limited.

© Copyright 2022 by WATER SERVICES ASSOCIATION of Australia Limited **All rights reserved.**

CONTENTS

1 EXECUTIVE SUMMARY	5
1.1 Recommendations	5
2 THE APPLICANT.....	5
2.1 The Manufacturer.....	5
2.2 The Supplier.....	6
3 THE PRODUCT	6
4 SCOPE OF THE APPRAISAL	7
5 APPRAISAL CRITERIA	7
5.1 Quality Assurance Requirements	7
5.2 Performance Requirements	7
6 COMPLIANCE WITH APPRAISAL CRITERIA.....	7
6.1 Compliance with Quality Assurance Requirements	7
6.2 Compliance with Performance Requirements.....	8
6.2.1 Material properties of ductile iron	8
6.2.2 Components material list.....	8
6.2.3 Flanges.....	8
6.2.4 Elastomeric joints	8
6.2.5 Polymeric thermal bonded coatings	9
6.2.6 Type tests	9
6.2.7 Contact with drinking water	9
7 FITTING INSTRUCTIONS, TRAINING AND INSTALLATION	9
8 PRODUCT MARKING	9
9 PACKAGING AND TRANSPORTATION.....	10
10 PRODUCT WARRANTY	10
11 WATER AGENCY EXPERIENCE WITH THE PRODUCT OR FIELD TESTING REPORT	10
12 DISCUSSION	10
13 OUTCOMES OF EXPERT PANEL PRODUCT REVIEW.....	11
14 FUTURE WORKS.....	11
15 DISCLAIMER.....	11
15.1 Issue of Report.....	11
15.2 Limits on Reliance on Information and Recommendations.....	12
15.2.1 Disclaimer of liability	12
15.2.3 Need for independent assessment.....	12
15.3 No Updating	13
15.4 No Warranty	13
APPENDIX A - PRODUCT LITERATURE.....	14
APPENDIX B - QUALITY CERTIFICATIONS.....	29
APPENDIX C - SUPPLIER CONTACTS	35

1 EXECUTIVE SUMMARY

AVK Australia Holding Pty Ltd is part of the AVK Group, an international manufacturer of valves and fittings for the water, gas, sewerage and fire protection industries

AVK has a long-term contract to supply Viadux with their required range of Sureflow branded gate valves, ductile iron fittings and other pipeline components. The resilient seated gate valves are marketed exclusively by Viadux under the Sureflow brand.

This appraisal covers DN 80 to DN 750 Sureflow resilient seated gate valves manufactured to AS/NZS 2638.2:2011 *Gate valves for waterworks purposes, Part 2: Resilient-seated* with the following configurations:

Flange – Flange: DN 80 – DN 750

Socket – Socket: DN 80 – DN 375

Spigot – Spigot: DN 80 – DN 300

Flange – Socket: DN 80 – DN 150

Flange – Flange with integral bypass: DN 450 – DN 750

Flange – Flange OS&Y: DN 80 – DN 300

The range is detailed in Section 3 Table 1.

This Issue 9 is a replacement for the previous version of the appraisal which had reached its 5-year expiry date.

Issue 8 was to include flanged OS&Y, socketted, spigotted and flange – socket gate valves in the scope of this report.

The RSVs are rated as PN 16 and are available with either clockwise or anti-clockwise closing directions. Operation can be by key, hand wheel or gearbox.

AVK Australia, AVK Anhui and Viadux all hold ISO 9001 Quality Management System Licences.

The Sureflow resilient seated gate valve range has ISO Type 5 StandardsMark product certification to AS 2638.2-2011.

Sureflow resilient seated gate valves in sizes DN 80 to DN 750 are deemed to meet the requirements of WSA PS 260 *Gate Valves, Resilient Seated for Pressure Applications – Drinking Water, Non-Drinking Water Supply and Sewerage* and are considered as 'fit-for-purpose'.

1.1 Recommendations

It is recommended that WSAA members, subject to any specific requirements of the member, accept/authorise the Sureflow range of DN 80 to DN 750 resilient seated gate valves included in this Appraisal and detailed in Section 3, for use in water supply and sewerage pressure pipelines, provided they are installed in accordance with applicable WSAA codes and manufacturers' requirements.

2 THE APPLICANT

The Applicant is AVK Holding Australia Pty Ltd.

2.1 The Manufacturer

AVK Australia Holding Pty Ltd is privately owned and part of the AVK Group which is comprised of more than 100 companies operating in more than 35 countries. AVK is a leading international manufacturer of valves and pipeline accessories.

AVK Australia incorporates AVK Valves, AVK Wang, AVK Currumbin, AVK Flow Control and AVK Complete Tapping Service. The company utilises its local manufacturing footprint as

well as the AVK Global production supply chain to service pipeline infrastructure, water treatment, sewage processing, fire protection, irrigation, dams, reservoirs, mining operations and gas distribution.

AVK has been manufacturing in Australia for over 20 years and specialises in a range of valves, hydrant, couplings, repair clamps, tapping saddles, pipe fittings and other fittings and specialty products.

AVK machines, coats, assembles and tests the range of resilient seated gate valves at its Wingfield facility in Adelaide, South Australia for sizes up to DN 400. Valve components are sourced from various suppliers based in Denmark, China, Australia and Vietnam. DN 450 to DN 750 valves are manufactured by AVK Anhui in China.

AVK has requested that the identity of their component suppliers remain “commercial in confidence” however has provided details and supplied copies of their ISO 9001 Quality Management System licences together with typical material test reports to validate compliance.

2.2 The Supplier

AVK has a long-term contract to supply Viadux with their required range of Sureflow branded gate valves, ductile iron fittings and other pipeline components. The resilient seated gate valves are marketed exclusively by Viadux under the Sureflow brand.

Viadux Pty Ltd is a well-established reseller of pipeline products and is a member of the Reece Group.

3 THE PRODUCT

This appraisal covers DN 80 to DN 750 Sureflow resilient seated gate valves manufactured to AS/NZS 2638.2:2011 *Gate valves for waterworks purposes, Part 2: Resilient-seated*.

The range is detailed in Table 1.

TABLE 1. SUREFLOW RESILIENT SEATED GATE VALVES

DN	Flanged	Socketted	Spigotted	FI - Soc	Flanged with Integral Bypass	Flanged OS&Y
80	✓	✓	✓	✓		✓
100	✓	✓	✓	✓		✓
150	✓	✓	✓	✓		✓
200	✓	✓	✓			✓
225	✓	✓	✓			✓
250	✓	✓	✓			✓
300	✓	✓	✓			✓
375	✓	✓				
400	✓					
450	✓				✓ DN 100, DN 150	
500	✓				✓ DN 100, DN 150	
600	✓				✓ DN 100, DN 150	
750	✓				✓ DN 150	

The RSVs included in this Appraisal are rated as PN 16 and are available with either clockwise or anti-clockwise closing directions. Operation can be by key, hand wheel or gearbox.

Flanges comply with Figure B5 of AS/NZS 4087: 2011 *Metallic flanges for waterworks purposes*.

Polymeric coatings conform to AS/NZS 4158:2003 *Thermal bonded polymeric coating on valves and fittings for water industry purposes*.

4 SCOPE OF THE APPRAISAL

The scope of this appraisal includes DN 80 to DN 750 PN 16 resilient-seated gate valves with clockwise or anticlockwise closing options and operation by key, hand wheel or gearbox, as detailed in Table 1 and included in the ISO Type 5 StandardsMark Product Certification schedule.

5 APPRAISAL CRITERIA

5.1 Quality Assurance Requirements

The WSAA Product Appraisal Technical Advisory Group accepts gate valves manufactured in compliance with AS/NZS 2638.2:2011 *Gate valves for waterworks purposes, Part 2: Resilient seated* and duly certified by means of an ISO Type 5 product certification scheme undertaken by a JAS-ANZ accredited Conformity Assessment Body (CAB) or by an international accreditation system recognised by JAS-ANZ.

The manufacturer is generally expected to have a production management and control system that has been duly accredited in accordance with ISO 9001 as a prerequisite to undergoing a product certification audit.

The ISO Type 5 Product Certification Scheme shall meet the criteria described in WSA TN-08.

5.2 Performance Requirements

Sureflow resilient seated gate valves have been appraised for compliance with AS/NZS 2638.2:2011 *Gate valves for waterworks purposes, Part 2: Resilient seated*.

Appraisal criteria are also determined by the WSAA WSAA Product Appraisal Technical Advisory Group and regularly reviewed to ensure that the criteria reflect the requirements of WSAA members.

The following Product Specification is also relevant to this application:

WSA PS 260 *Gate Valves, Resilient Seated for Pressure Applications – Drinking Water, Non-Drinking Water Supply and Sewerage*.

A copy of the Product Specification is available at the following link:

<https://www.wsaa.asn.au/shop/product/53481>

6 COMPLIANCE WITH APPRAISAL CRITERIA

6.1 Compliance with Quality Assurance Requirements

AVK has submitted the following quality certificates:

- ISO 9001:2015 Certificate of Registration No. QEC 13894 issued to AVK Australia Holding Pty Ltd by SAI-Global.
- ISO 9001:2015 Certificate of Registration FM 84039 issued to AVK Valves (Anhui) Co Ltd by BSI.
- ISO 9001:2015 Certificate of Registration No. 228-Q-4 issued to Viadux Pty Ltd by Global Compliance Certification.

- AS/NZS 2638.2:2011 ISO Type 5 StandardsMark product certification Licence No. SMK 02420 issued to AVK Australia Holding Pty Ltd by SAI-Global.

Copies of the Quality Assurance and Product Certification licences have been included in Appendix B and are also available from WSAA.

Copies of Quality Assurance certificates have also been supplied for the component suppliers and are held on file by WSAA.

6.2 Compliance with Performance Requirements

6.2.1 Material properties of ductile iron

AS/NZS 2638.2 Table 2.1 requires ductile iron components to conform to minimum grade 400-15, although higher strength ductile iron to AS1831 is also acceptable. AVK has nominated Grade 500-7 ductile iron as the material grade for their RSV's and have provided material test certificates to demonstrate compliance to this specification.

6.2.2 Components material list

The Sureflow RSV material specifications are detailed below in Table 2. Material test certificates have been submitted for each component to demonstrate conformance to the nominated material. The materials meet the requirements of AS/NZS 2638.2.

TABLE 2
SUREFLOW RSV COMPONENT MATERIAL LIST

Component	AS/NZS 2638.2 Basic Material	AVK		
		Material	Standard	Grade
Body	Ductile Iron	Ductile Iron	AS 1831	GJS/500-7
Bonnet	Ductile Iron	Ductile Iron	AS 1831	GJS/500-7
Spindle seal retainer	Copper Alloy	Stainless Steel#	CF8M	ASTM A743
Gate core	Ductile Iron	Ductile Iron	AS 1831	GJS/500-7
Gate encapsulation	Synthetic Rubber	Synthetic Rubber	AS 1646	EPDM
Gate nut	Copper Alloy	Copper Alloy	EN12420	CW602N
Thrust collar	Copper Alloy	Copper Alloy	EN12420	CW602N
Spindle	Stainless Steel	Stainless Steel	ASTM A276	316
Spindle cap	Ductile Iron	Ductile Iron	AS 1831	GJS/500-7
Fasteners	Stainless Steel	Stainless Steel	ASTM A276	316
Gaskets	Synthetic Rubber	Synthetic Rubber	AS1646	EPDM
O-rings	Synthetic Rubber	Synthetic Rubber	AS 1646	NBR

Acceptable alternative nominated in AS/NZS 2638.2

6.2.3 Flanges

Flanges comply with AS/NZS 4087:2011 *Metallic flanges for waterworks purposes* PN 16, Figure B5.

Recommended installation is in accordance with the requirements of AS/NZS 4087.

6.2.4 Elastomeric joints

The sockets are T- type and designed for jointing to spigots of AS/NZS 2280 ductile iron pipes and Series 2 spigots of AS/NZS 1477 PVC-U, AS/NZS 4441 PVC-O, AS/NZS 4765 PVC-M and AS 3518 ABS pressure pipes.

The sockets are also suitable for use with Series 1 PVC pipes using seals manufactured in EPDM elastomer complying with AS 1646.

Type Test Reports were submitted for PA 1016 to demonstrate compliance of the elastomeric seal joints with the requirements of AS/NZS 2280.

6.2.5 Polymeric thermal bonded coatings

Sureflow resilient seated gate valves are coated with Akzo Nobel Resicoat R4, a thermosetting epoxy powder coating.

Akzo Nobel Resicoat R4 has StandardsMark product certification to AS/NZS 4158:2003 *Thermal-bonded polymeric coatings on valves and fittings for water industry purposes*, issued by SAI-Global.

The coating is applied in-house by AVK at either the Adelaide or Anhui facilities and application procedures are audited by SAI-Global in conjunction with AS/NZS 2638.2 StandardsMark certification procedures.

6.2.6 Type tests

AVK has submitted copies of Type Test reports for DN 80 to DN 750 RSV's to demonstrate compliance with AS/NZS 2638.2:2011. The testing was completed by Prove Standards and Engineering Pty Ltd, University of SA and National Centre for Supervision and Inspection of Drainage Irrigation and Water Saving Equipment Products Quality.

6.2.7 Contact with drinking water

Clause 2.3 of AS/NZS 2638.2 requires compliance with AS/NZS 4020 *Testing of products for use in contact with drinking water*. AVK has submitted a complying Test Report No. 223527 dated 10th April 2018 from Australian Water Quality Centre where testing was carried out on a DN 80 RSV to demonstrate compliance to AS/NZS 4020:2005.

7 FITTING INSTRUCTIONS, TRAINING AND INSTALLATION

An Installation, Operation & Maintenance Manual is available for the range of resilient seated gate valves. The manual can be obtained by downloading from the following link <http://www.avkvalves.com.au/en-au/downloads/product-manuals> or from WSAA.

8 PRODUCT MARKING

Sureflow resilient seated gate valves have the following markings cast on the valve body in accordance with AS/NZS 2638:2011:

- Manufacturers Name / Brand: Sureflow
- Nominal Size: DN XXX
- Year of manufacture: yymmdd
- Pressure classification: PN 16
- Standard number: AS 2638.2

AVK also applies a durable label permanently affixed to the body that has additional markings including the StandardsMark logo and other details. See Figure 1 for an example.



FIGURE 1 ADDITIONAL MARKING

9 PACKAGING AND TRANSPORTATION

Sureflow RSV's are supplied with the gate in a partly open position to avoid a permanent set of the EPDM rubber. This is in accordance with AS/NZS 2638.2.

The valves are palletised, separated with corrugated cardboard and shrink wrapped to prevent product movement and damage to coatings during transportation.



FIGURE 2 DETAILS OF PACKAGING

10 PRODUCT WARRANTY

The products are covered by the normal commercial and legal requirements of the *Competition and Consumer Act 2010 (Cth)*, which covers manufacture to the relevant standard. Details of Viadux's warranty is included in their terms and conditions of sale.

11 WATER AGENCY EXPERIENCE WITH THE PRODUCT OR FIELD TESTING REPORT

Gate valves have been in common use for many years and are currently utilised by all water agencies throughout Australia. It is deemed unnecessary to conduct a field trial as nothing new can be learned.

12 DISCUSSION

Table 3 below highlights the recommendations of use for the Sureflow gate valve range.

TABLE 3 GATE VALVES LIMITATION OF USE

Product Detail	Recommendation
Suitable Applications	Pipelines used in water reticulation, sewage, waste water and irrigation
Limitations	Maximum service temperature 40°C.
	Gate valves should not be used for throttling or adjusting flow.

Spindle caps are supplied fully coated blue with a white insert for anti-clockwise close and red with a red insert for clockwise close. Purple coloured spindle caps are also available for recycled water applications.

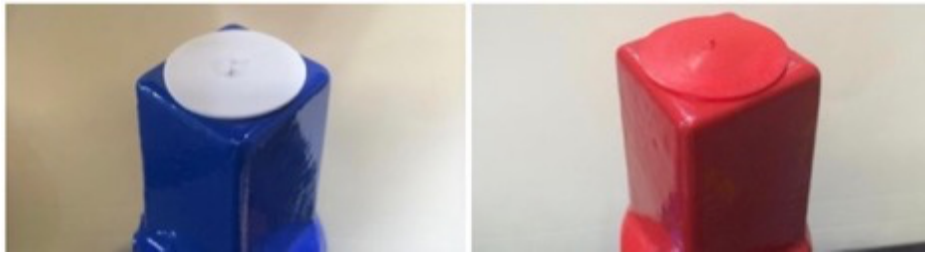


FIGURE 3 SPINDLE CAP COLOURING

13 OUTCOMES OF EXPERT PANEL PRODUCT REVIEW

There are no outstanding queries.

14 FUTURE WORKS

No future works have been identified.

15 DISCLAIMER

This Product Appraisal Report (Report) is issued by the Water Services Association of Australia Limited on the understanding that:

This Report applies to the product(s) as submitted. Any changes to the product(s) either minor or major shall void this Report.

To maintain the recommendations of this Report any such changes shall be detailed and notified to the Product Appraisal Manager for consideration and review of the Report and appropriate action. Appraisals and their recommendations will be the subject of continuous review dependent upon the satisfactory performance of products.

WSAA reserves the right to undertake random audits of product manufacture and installation. Where products fail to maintain appraised performance requirements the appraisal and its recommendations may be modified and reissued. Appraisal reports will be reviewed and reissued at regular intervals not exceeding five (5) years.

The following information explains a number of very important limits on your ability to rely on the information in this Report. Please read it carefully and take it into account when considering the contents of this Report.

Any enquiries regarding this report should be directed to the Program Manager, Carl Radford, Phone: 03 8605 7601 email carl.radford@wsaa.asn.au.

15.1 Issue of Report

This Report has been published and/or prepared by the Water Services Association of Australia Limited and nominated Project Manager and peer group of technical specialists (the Publishers).

The Report has been prepared for use within Australia only by technical specialists that have expertise in the function of products such as those appraised in the Report (the Recipients).

By accepting this Report, the Recipient acknowledges and represents to the Publisher(s) and each person involved in the preparation of the Report that the Recipient has understood and accepted the terms of this Disclaimer.

15.2 Limits on Reliance on Information and Recommendations

15.2.1 Disclaimer of liability

Neither the Publisher(s) nor any person involved in the preparation of the Report accept(s) any liability for any loss or damage suffered by any person however caused (including negligence or the omission by any person to do anything) relating in any way to the Report or the product appraisal criteria underlying it. This includes (without limitation) any liability for any recommendation or information in the Report or any errors or omissions.

15.2.2 Intellectual Property and other rights

The Water Services Association of Australia Limited does not undertake any assessment of whether the importation, manufacture, sale or use of the Product the subject of this Report infringes the intellectual property rights or proprietary rights of any person. Recipients of the report should undertake their own assessment of whether (as relevant) the importation, manufacture, sale or use of the relevant Products infringe the intellectual property rights or other proprietary rights of any person. If the Product infringes intellectual property rights or other proprietary rights there is potential for the supply of the Products to be interrupted.

From time to time the Water Services Association of Australia Limited and the other Publishers may receive notice of allegations that the importation, manufacture, sale or use of the Product infringes intellectual property rights or other proprietary rights. The Water Services Association of Australia Limited's policy is to not refer to such allegations in its reports or take any other steps to put Recipients on notice of such allegations, unless and until it is aware that the allegations have been admitted or proved in Court. As such, Recipients acknowledge, agree and accept that the Water Services Association of Australia Limited may have information in its possession about intellectual property rights infringement allegations or other infringement allegations in relation to the Product which are not referred to or disclosed in this Report and which are not otherwise communicated to Recipient.

15.2.3 Need for independent assessment

The information and any recommendation contained (expressly or by implication) in this Report are provided in good faith (and subject to the limitations noted in this Report). However, you should treat the information as indicative only. You should not rely on that information or any such recommendation except to the extent that you reach an agreement to the contrary with the Publisher(s).

This Report does not contain all information that a person might require for the purposes of assessing any product discussed or appraised within it (Product). The product appraisal criteria used in preparing this Report may not address all relevant aspects of the Product.

Recipients should seek independent evidence of any matter which is material to their decisions in connection with an assessment of the Product and consult their own advisers for any technical information required. Any decision to use the Product should take into account the reliability of that independent evidence obtained by the Recipient regarding the Product.

Recipients should also independently verify and assess the appropriateness of any recommendation in the Report, especially given that any recommendation will not take into account a Recipient's particular needs or circumstances.

WSAA has not evaluated the extent of the product liability and professional indemnity insurance that the provider of the product maintains. Recipients should ensure that they evaluate the allocation of liability for product defects and any professional advice obtained in relation to the product or its specification including the requirements for product liability and professional indemnity insurance.

15.3 No Updating

Neither the Publisher(s) nor any person involved in the preparation of this Report [has] [have] any obligation to notify you of any change in the information contained in this Report or of any new information concerning the Publisher(s) or the Product or any other matter.

15.4 No Warranty

The Publisher(s) do[es] not, in any way, warrant that steps have been taken to verify or audit the accuracy or completeness of the information in this Report, or the accuracy, completeness or reasonableness of any recommendation in this Report.

APPENDIX A - PRODUCT LITERATURE



SUREFLOW RESILIENT SEAT GATE VALVE PN16

2570/90

To AS 2638.2, reduced weight and environmentally friendly
Stem sealing exchangeable under pressure
Face to face dimension to AS 2638.2
Flange and drilling to AS 4087 Figure B5 (AS 2129 Table D and raised face) or AS 2129 Table E and raised face

Use:

- For water, sewage and neutral liquid applications
 - Valve designed for use up to 70°C
 - Where applicable; for AS 4020 compliance, max temp = 40°C
- Note: Always observe pipe material recommended operating temperatures

Tests:

- Hydraulic test to AS 2638.2:
 - Seat: 17.6 bar
 - Body: 24 bar
 - Operating torque test

Optional Extras:

- Handwheel (refer to series 2570/98)
- ISO flange for gearbox/actuation (refer to series 2570/92)



Quality
ISO 9001

SAI GLOBAL



Health & Safety
AS 4801

SAI GLOBAL



Environment
ISO 14001

SAI GLOBAL



DN80, 100



DN225, 250, 300, 375, 400



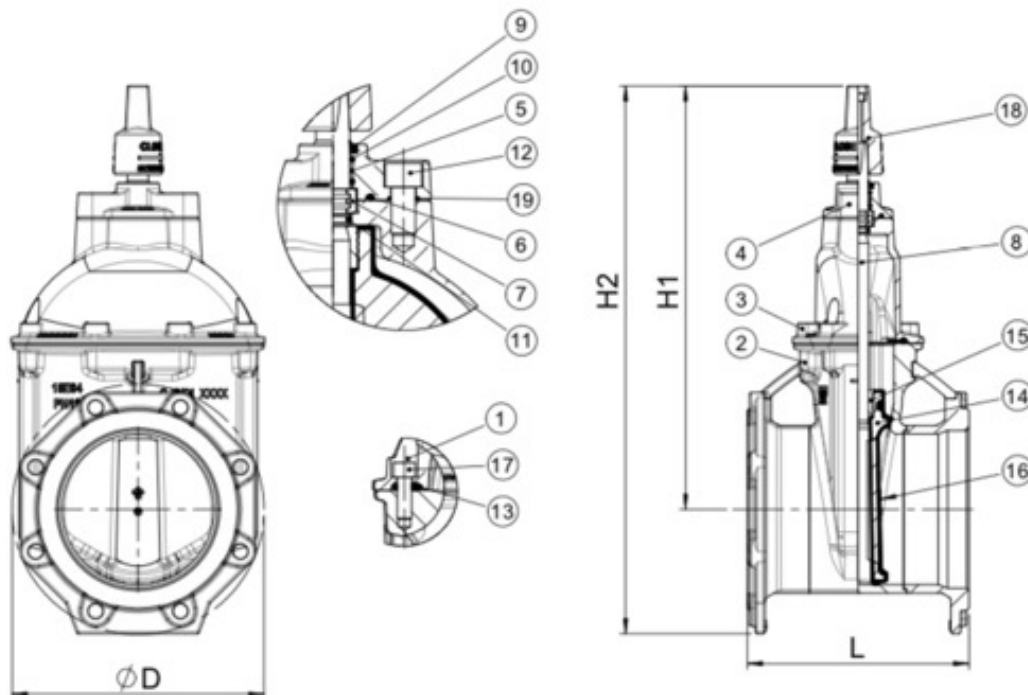
DN150, 200



Australian
Standard
AS 2638.2 2011
EN 558 22420
SAI Global



sureflow®

SUREFLOW RESILIENT SEAT GATE VALVE PN16**2570/90****Component list**

1. Hot melt seal		12. Bolt socket	Stainless Steel 316, fully encapsulated with hot melt glue
2. Body	Ductile Iron, 500-7 to AS 1831	13. Bonnet gasket	EPDM rubber
3. Bonnet	Ductile Iron, 500-7 to AS 1831	14. Wedge	Ductile Iron, 500-7 to AS 1831
4. Gland flange	Stainless Steel CF8M	15. Wedge nut	Dezincification resistant brass, CZ 132 to AS 2345
5. Bushing	Polyamid	16. Wedge rubber	EPDM
6. O-ring	NBR	17. Bolt socket	Stainless Steel 316, fully encapsulated with hot melt glue
7. Thrust collar	Dezincification resistant brass, CZ 132 to AS 2345	18. Stem cap	Ductile Iron, 500-7 to AS 1831, 35mm cap square
8. Stem	Stainless Steel 431	19. O-ring	NBR
9. Wiperring	NBR		
10. O-ring	NBR		
11. O-ring	NBR		

Components can be substituted with equivalent or higher class materials.

Reference nos. and dimensions - Flange drilling to AS 4087 Figure B5 (AS 2129 Table D)

AVK ref. nos. OC	AVK ref. nos. ACC	DN mm	L mm	H1 mm	H2 mm	D mm	Hole OD mm	Holes nos.	Bolt PCD	Stem SOR	Weight kg
2570-080-902540120	2570-080-903540120	80	203	351	424	190	18	4	146	19	13
2570-100-902540120	2570-100-903540120	100	229	374	457	218	18	4	178	19	16
2570-150-902540120	2570-150-903540120	150	267	457	600	285	18	8	235	19	34
2570-200-902540120	2570-200-903540120	200	292	561	726	332	18	8	292	24	52
2570-225-902540120	2570-225-903540120	225	305	643	828	370	18	8	324	27	87
2570-250-902540120	2570-250-903540120	250	330	656	858	405	22	8	356	27	93
2570-300-902540120	2570-300-903540120	300	356	739	967	455	22	12	406	27	126
2570-375-902540120	2570-375-903540120	375	381	917	1192	550	26	12	495	32	227
2570-400-902540120	2570-400-903540120	400	406	930	1220	580	26	12	521	32	237

The designs, materials and specifications shown are subject to change without notice due to the continuous development of our product program.



SUREFLOW GATE VALVE, FLANGED, SHORT
SS stem, ISO Mounting Flange, EPDM Seal, ACC/CC, DN450-750

2570/92-003

Sureflow gate valves are designed with built-in safety in every detail. The wedge is fully vulcanized with drinking water approved EPDM rubber compound. It features an outstanding durability due to the ability of the rubber to retain its original shape, the double bonding vulcanization process and the sturdy wedge design. The triple stem seal system, high strength stem and thorough corrosion protection safeguard the unmatched reliability.

Product description:

Flanged gate valve for potable water and neutral liquids to max. 70°C.

Standards:

- Designed according to AS/NZS 2638.2
- Face-to-face dimension according to AS/NZS 2638.2
- Flange drilling to AS/NZS 4087 B5 PN16
- Flange drilling to AS 2129 Table E
- Approved to AS/NZS 4020

Features:

- Fixed, integral wedge nut prevents vibration
- Polyamide wedge shoes protect the wedge rubber during opening and closing and reduce friction
- Stainless steel stem with wedge stop
- A large conical stem hole in the wedge prevents stagnant water
- Three independent stem seals: a metal reinforced wiper ring protects against external dust, four O-rings surround the radial bearing and innermost an EPDM O-ring is the main seal to the flow
- Removable gland flange for under-pressure replacement of thrust- and radial bearings and seals
- ISO mounting flange F16 (F14 compatible); electric actuator or gearbox is recommended
- Round bonnet gasket fixed in a recess to prevent blow-out with integral bolt sealing
- Counterbored stainless steel bonnet bolts encircled by the bonnet gasket and sealed with hotmelt glue
- Integrated lifting eyes for easy handling
- Epoxy coating to AS/NZS 4158
- StandardsMark and WaterMark approved to AS/NZS 2638.2

Accessories:

Gearbox, actuator and handwheel



Quality
ISO 9001
SAI GLOBAL



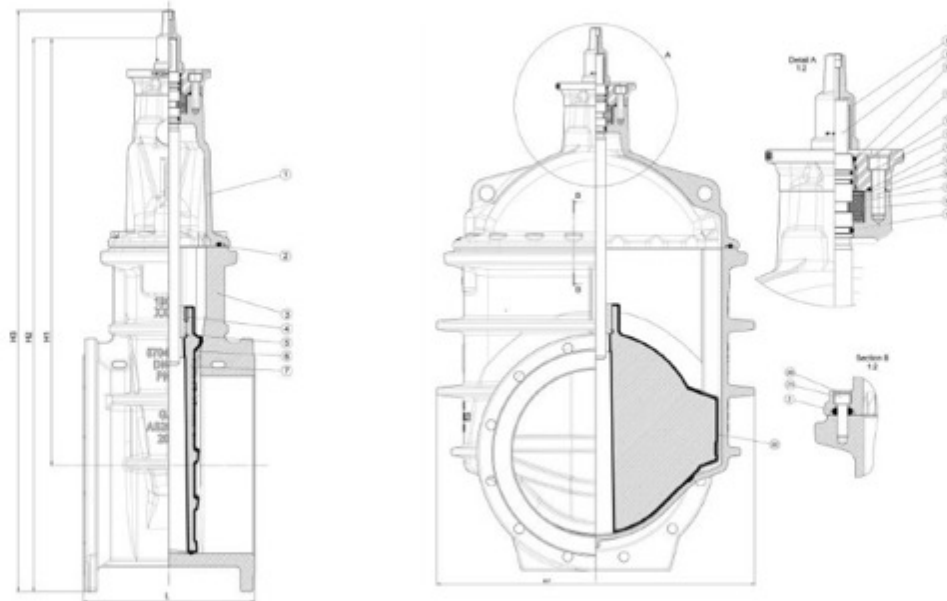
Health & Safety
AS 4801
SAI GLOBAL



Environment
ISO 14001
SAI GLOBAL



sureflow

SUREFLOW GATE VALVE, FLANGED, SHORT
SS stem, ISO Mounting Flange, EPDM Seal, ACC/CC, DN450-750
2570/92-003**Component list:**

1. Bonnet	Ductile iron GJS-500-7	12. Gland flange (1)	Ductile iron GJS-500-7
2. Bonnet gasket	EPDM rubber	13. Radial bearing	Bronze CC491
3. Body	Ductile iron GJS-500-7	14. O-ring	NBR rubber
4. Lock pin	Steel	15. Bushing	Polyamide
5. Wedge nut	Brass, DZR CZ132	16. Thrust bearing	CSB
6. Wedge rubber	EPDM rubber	17. Support washer	Stainless steel 1.4057
7. Wedge core	Ductile iron GJS-500-7	18. Thrust collar	Stainless steel 1.4057
8. Stem cap	Ductile iron GJS-500-7	19. Stem seal	EPDM rubber
9. Stem	Stainless steel 1.4057	20. Seal	Hot melt glue
10. Wiper ring	NBR rubber	21. Bonnet bolt	Stainless steel A4
11. Gland flange bolt	Stainless steel A4	22. Wedge shoe	Polyamide

Components can be substituted with equivalent or higher class materials without prior notification.

1) DN450-600: stainless steel; DN750: Ductile iron GJS-500-7

Reference nos. and dimensions:

Sureflow ref. nos.	Closing Direction	DN mm	Flange drilling	H1 mm	H2 mm	H3 mm	L mm	W mm	Weight kg
2570-450-92-2540120	CC	450	AS/ NZS 4087 B5	1077	1397	1467	432	860	480
2570-450-92-3540120	ACC	450	AS/NZS 4087 B5	1077	1397	1467	432	860	480
2570-450-92-2640120	CC	450	AS2129 E	1077	1397	1467	432	860	480
2570-450-92-3640120	ACC	450	AS2129 E	1077	1397	1467	432	860	480
2570-500-92-2540120	CC	500	AS/NZS 4087 B5	1105	1457	1527	457	860	510
2570-500-92-3540120	ACC	500	AS/NZS 4087 B5	1105	1457	1527	457	860	510
2570-600-92-2540120	CC	600	AS/NZS 4087 B5	1244	1656	1726	508	969	720
2570-600-92-3540120	ACC	600	AS/NZS 4087 B5	1244	1656	1726	508	969	720
2570-600-92-2640120	CC	600	AS2129 E	1244	1656	1726	508	969	720
2570-600-92-3640120	ACC	600	AS2129 E	1244	1656	1726	508	969	720
2570-750-92-2540120	CC	750	AS/NZS 4087 B5	1698	2196	2268	610	1250	1705
2570-750-92-3540120	ACC	750	AS/NZS 4087 B5	1698	2196	2268	610	1250	1705
2570-750-92-2640120	CC	750	AS2129 E	1698	2196	2268	610	1250	1705
2570-750-92-3640120	ACC	750	AS2129 E	1698	2196	2268	610	1250	1705

The designs, materials and specifications shown are subject to change without notice due to the continuous development of our product program.

SUREFLOW RESILIENT SEAT GATE VALVE PN16**2570/50**

To AS 2638.2, reduced weight and environmentally friendly
 Stem sealing exchangeable under pressure
 Socket ends to AS/NZS 2280 / AS 1477 Type 2 or AS 1477 Type 1

Use:

- For water, sewage and neutral liquid applications
 - Valve designed for use up to 70°C
 - Where applicable; for AS 4020 compliance, max temp = 40°C
- Note: Always observe pipe material recommended operating temperatures

Tests:

- Hydraulic test to AS 2638.2:
 - Seat: 17.6 bar
 - Body: 24 bar
 - Operating torque test

Optional Extras:

- Anchor legs for DN100 & DN150 only (ordered separately)
- Handwheel (refer to series 2570/58)
- ISO flange for gearbox/actuation (refer to series 2570/52)

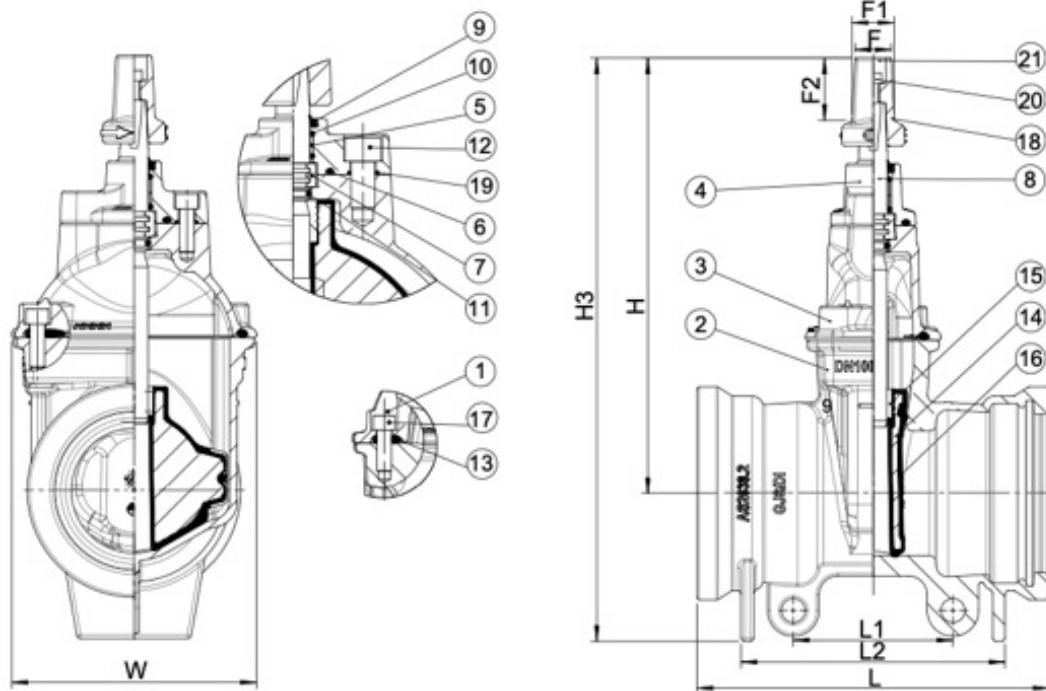


**Anchor legs
DN100 & DN150 only**



sureflow®

Version number 1

SUREFLOW RESILIENT SEAT GATE VALVE PN16**2570/50****Component list**

1. Hot melt seal		13. Bonnet gasket	with hot melt glue
2. Body	Ductile Iron, 500-7 to AS 1831	14. Wedge	Ductile Iron, 500-7 to AS 1831
3. Bonnet	Ductile Iron, 500-7 to AS 1831	15. Wedge nut	Dezincification resistant brass, CZ 132 to AS 2345
4. Gland flange	Stainless Steel CF8M	16. Wedge rubber	EPDM
5. Bushing	Polyamide	17. Bolt socket	Stainless Steel 316, fully encapsulated with hot melt glue
6. O-ring	NBR	18. Stem cap	Ductile Iron, 500-7 to AS 1831, 35mm cap square
7. Thrust collar	Dezincification resistant brass, CZ 132 to AS 2345	19. O-ring	NBR
8. Stem	Stainless Steel 431	20. Bolt socket	Stainless Steel 316
9. Wiper ring	NBR	21. Stem cap insert	Plastic
10. O-ring	NBR		
11. O-ring	NBR		
12. Bolt socket	Stainless Steel 316, fully encapsulated		

Components can be substituted with equivalent or higher class materials.

Reference nos. and dimensions

Sureflow ref. nos. CC	Sureflow ref. nos. ACC	DN mm	Pipe D.ex. AS 2280/AS 1477 Type 2		Pipe D.ex. AS 1477 Type 1		L mm	L1 mm	L2 mm	W mm	H mm	H3 mm	F mm	F1 mm	F2 mm	Weight kg
			D (min-max) mm	D (min-max) mm	D (min-max) mm	D (min-max) mm										
2570-080-50-2940121	2570-080-50-3940121	80	94-97	-	-	-	252	-	132	174	324	393	30	35	50	14
2570-100-50-2940121	2570-100-50-3940121	100	120-123	-	-	-	280	126	210	195	347	465	30	35	50	18
2570-150-50-2940121	2570-150-50-3940121	150	175-178	-	-	-	304	126	213	275	429	574	30	35	50	31.5
2570-200-50-2940121	2570-200-50-3940121	200	230-233	-	-	-	396	-	206	335	563	707	29	35	57	53.5
2570-225-50-2940121	2570-225-50-3940121	225	257-260	-	-	-	450	-	250	422	643	801	29	35	57	84
2570-250-50-2940121	2570-250-50-3940121	250	284-287	-	-	-	466	-	256	422	656	828	29	35	57	88
2570-300-50-2940121	2570-300-50-3940121	300	343-346	-	-	-	488	-	278	452	739	942	29	35	57	118
2570-375-50-2940121	2570-375-50-3940121	375	424-428	-	-	-	560	-	292	564	917	1166	29	35	57	224
2570-080-50-2940122	2570-080-50-3940122	80	-	88.7-89.1	-	-	252	-	132	174	324	393	30	35	50	14
2570-100-50-2940122	2570-100-50-3940122	100	-	114-114.5	-	-	280	126	210	195	347	465	30	35	50	18
2570-150-50-2940122	2570-150-50-3940122	150	-	160-160.5	-	-	304	126	213	275	429	574	30	35	50	31.5
2570-200-50-2940122	2570-200-50-3940122	200	-	225-225.6	-	-	396	-	206	335	563	707	29	35	57	53.5
2570-225-50-2940122	2570-225-50-3940122	225	-	250-250.7	-	-	450	-	250	422	643	801	29	35	57	84
2570-250-50-2940122	2570-250-50-3940122	250	-	280-280.8	-	-	466	-	256	422	656	828	29	35	57	88
2570-300-50-2940122	2570-300-50-3940122	300	-	315-315.9	-	-	488	-	278	452	739	942	29	35	57	118
2570-375-50-2940122	2570-375-50-3940122	375	-	400-401	-	-	560	-	292	564	917	1166	29	35	57	224

The designs, materials and specifications shown are subject to change without notice due to the continuous development of our product program.

SUREFLOW RESILIENT SEAT GATE VALVE PN16**2570/60**

To AS 2638.2, reduced weight and environmentally friendly
 Stem sealing exchangeable under pressure
 Spigot ends to AS/NZS 2280 Figure J23

Use:

- For water, sewage and neutral liquid applications
 - Valve designed for use up to 70°C
 - Where applicable; for AS 4020 compliance, max temp = 40°C
- Note: Always observe pipe material recommended operating temperatures

Tests:

- Hydraulic test to AS 2638.2:
 - Seat: 17.6 bar
 - Body: 24 bar
 - Operating torque test

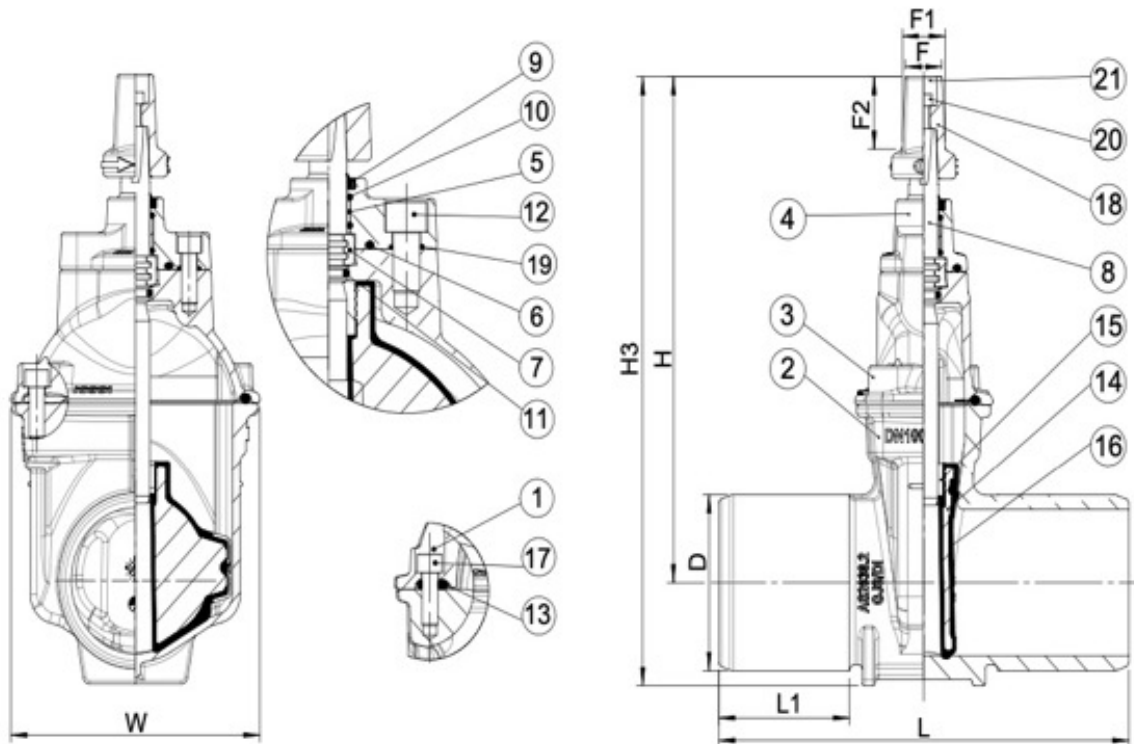
Optional Extras:

- Handwheel (refer to series 2570/68)
- ISO flange for gearbox/actuation (refer to series 2570/62)



sureflow®

Version number 1

SUREFLOW RESILIENT SEAT GATE VALVE PN16**2570/60****Component list**

1. Hot melt seal		13. Bonnet gasket	with hot melt glue
2. Body	Ductile Iron, 500-7 to AS 1831	14. Wedge	EPDM rubber
3. Bonnet	Ductile Iron, 500-7 to AS 1831	15. Wedge nut	Ductile Iron, 500-7 to AS 1831
4. Gland flange	Stainless Steel CF8M	16. Wedge rubber	Dezincification resistant brass, CZ 132 to AS 2345
5. Bushing	Polyamide	17. Wedge socket	EPDM
6. O-ring	NBR	18. Stem cap	Stainless Steel 316, fully encapsulated with hot melt glue
7. Thrust collar	Dezincification resistant brass, CZ 132 to AS 2345	19. Stem cap	Ductile Iron, 500-7 to AS 1831, 35mm cap square
8. Stem	Stainless Steel 431	20. O-ring	NBR
9. Wiper ring	NBR	21. Bolt socket	Stainless Steel 316
10. O-ring	NBR	22. Stem cap insert	Plastic
11. O-ring	NBR		
12. Bolt socket	Stainless Steel 316, fully encapsulated		

Components can be substituted with equivalent or higher class materials.

Reference nos. and dimensions

Sureflow ref. nos. CC	Sureflow ref. nos. ACC	DN mm	D mm	L mm	L1 mm	W mm	H mm	H3 mm	F mm	F1 mm	F2 mm	Weight kg
2570-080-60-2940120	2570-080-60-3940120	80	94.5	280	89	174.1	323.5	377.5	30	35	50	13
2570-100-60-2940120	2570-100-60-3940120	100	120.5	320	102	195	347	417	30	35	50	16
2570-150-60-2940120	2570-150-60-3940120	150	175.5	360	102	275	429	526	30	35	50	31
2570-200-60-2940120	2570-200-60-3940120	200	230.5	420	115	335	563	686	30	35	57	55
2570-225-60-2940120	2570-225-60-3940120	225	257.5	448	115	422	643.4	790.9	30	35	57	92
2570-250-60-2940120	2570-250-60-3940120	250	284.5	448	115	422	655.9	807.9	30	35	57	88
2570-300-60-2940120	2570-300-60-3940120	300	343.5	459.8	115	451.8	739.2	929.7	30	35	57	123

The designs, materials and specifications shown are subject to change without notice due to the continuous development of our product program.

SUREFLOW RESILIENT SEAT GATE VALVE PN16**2570/70**

To AS 2638.2, reduced weight and environmentally friendly
 Stem sealing exchangeable under pressure
 Socket to AS/NZS 2280 / AS 1477 Type 2 or AS 1477 Type 1
 Flange and drilling to AS 4087 Figure B5 (AS 2129 Table D and raised face)

Use:

- For water, sewage and neutral liquid applications
 - Valve designed for use up to 70°C
 - Where applicable; for AS 4020 compliance, max temp = 40°C
- Note: Always observe pipe material recommended operating temperatures

Tests:

- Hydraulic test to AS 2638.2:
 - Seat: 17.6 bar
 - Body: 24 bar
 - Operating torque test

Optional Extras:

- Handwheel (refer to series 2570/78)
- ISO flange for gearbox/actuation (refer to series 2570/72)



Quality
ISO 9001
SAI GLOBAL



Health & Safety
AS 4801
SAI GLOBAL

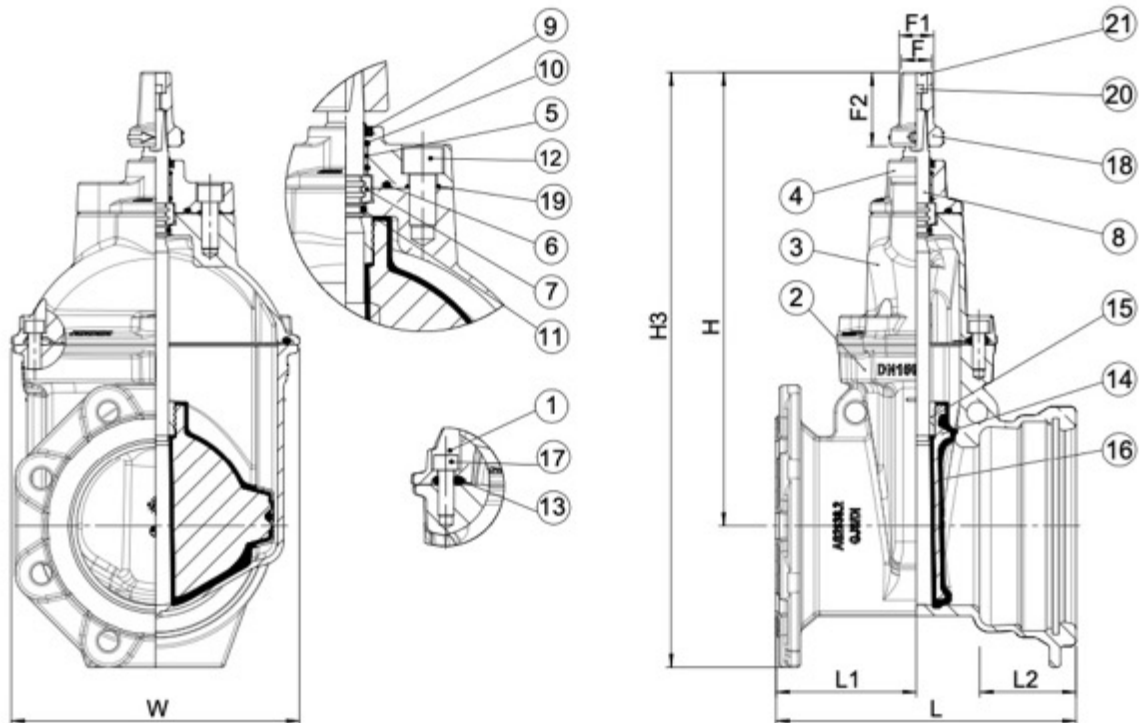


Environment
ISO 14001
SAI GLOBAL

**DN100****DN150**

sureflow®

Version number 1

SUREFLOW RESILIENT SEAT GATE VALVE PN16**2570/70****Component list**

1. Hot melt seal		13. Bonnet gasket	with hot melt glue
2. Body	Ductile Iron, 500-7 to AS 1831	14. Wedge	EPDM rubber
3. Bonnet	Ductile Iron, 500-7 to AS 1831	15. Wedge nut	Ductile Iron, 500-7 to AS 1831
4. Gland flange	Stainless Steel CF8M	16. Wedge rubber	Dezincification resistant brass, CZ 132 to AS 2345
5. Bushing	Polyamide	17. Wedge socket	EPDM
6. O-ring	NBR	18. Bolt socket	Stainless Steel 316, fully encapsulated with hot melt glue
7. Thrust collar	Dezincification resistant brass, CZ 132 to AS 2345	19. Stem cap	Ductile Iron, 500-7 to AS 1831, 35mm cap square
8. Stem	Stainless Steel 431	20. O-ring	NBR
9. Wiper ring	NBR	21. Bolt socket	Stainless Steel 316
10. O-ring	NBR		
11. O-ring	NBR		
12. Bolt socket	Stainless Steel 316, fully encapsulated		

Components can be substituted with equivalent or higher class materials.

Reference nos. and dimensions

Sureflow ref. nos.	Sureflow ref. nos.	DN mm	Pipe D.ex. AS 2280/AS 1477 Type 2		D2 mm	L mm	L1 mm	L2 mm	W mm	H mm	H3 mm	F mm	F1 mm	F2 mm	Flange OD mm	Bolt PCD mm	Hole Dia. mm	Weight kg
			D (min-max)	D (min-max)														
2570-080-70-2540121	2570-080-70-3540121	80	94-97	-	23	227.5	101.5	49	174	324	397	30	35	50	185	146	18	13
2570-100-70-2540121	2570-100-70-3540121	100	120-123	-	23	254.5	114.5	48	195	347	432	30	35	50	215	178	18	16
2570-150-70-2X40121	2570-150-70-3540121	150*	175-178	-	23	285.5	133.5	53	275	429	563	30	35	50	280	235	18	32
2570-080-70-2540122	2570-080-70-3540122	80	-	88.7-89.1	23	227.5	101.5	49	174	324	397	30	35	50	185	146	18	13
2570-100-70-2540122	2570-100-70-3540122	100	-	114-114.5	23	254.5	114.5	48	195	347	432	30	35	50	215	178	18	16
2570-150-70-2X40122	2570-150-70-3X40122	150*	-	160-160.5	23	285.5	133.5	53	275	429	563	30	35	50	280	235	18	32

*X: 5 = AS 4087 Figure B5
 *X: 6 = AS 2129 Table E

The designs, materials and specifications shown are subject to change without notice due to the continuous development of our product program.



SUREFLOW GATE VALVE, FLANGED LONG, BY-PASS SS stem, ISO Mounting Flange, EPDM Seal, ACC/CC, DN450-750

2570/42-003

Sureflow gate valves are designed with built-in safety in every detail. The wedge is fully vulcanized with drinking water approved EPDM rubber compound. It features an outstanding durability due to the ability of the rubber to retain its original shape, the double bonding vulcanization process and the sturdy wedge design. The triple stem seal system, high strength stem and thorough corrosion protection safeguard the unmatched reliability.

Product description:

Flanged gate valve for potable water and neutral liquids to max. 70°C. Interchangeable by-pass valve in DN100 or DN150.

Standards:

- Designed according to AS/NZS 2638.2
- Face-to-face dimension according to AS/NZS 2638.2
- Flange drilling to AS/NZS 4087 B5 PN16
- Flange drilling to AS 2129 Table E
- Approved to AS/NZS 4020

Features:

- Fixed, integral wedge nut prevents vibration
- Polyamide wedge shoes protect the wedge rubber during opening and closing and reduce friction
- Stainless steel stem with wedge stop
- A large conical stem hole in the wedge prevents stagnant water
- Three independent stem seals: a metal reinforced wiper ring protects against external dust, four O-rings surround the radial bearing and innermost an EPDM O-ring is the main seal to the flow
- Removable gland flange for under-pressure replacement of thrust- and radial bearings and seals
- ISO mounting flange F16 (F14 compatible); electric actuator or gearbox is recommended
- Round bonnet gasket fixed in a recess to prevent blow-out with integral bolt sealing
- Counterbored stainless steel bonnet bolts encircled by the bonnet gasket and sealed with hotmelt glue
- Integrated lifting eyes for easy handling
- Epoxy coating to AS/NZS 4158
- StandardsMark and WaterMark approved to AS/NZS 2638.2
- By-pass valve with interchangeable DN100 or DN150 options for DN 450-600 sizes. DN 750=DN 150 by-pass only

Accessories:

Gearbox, actuator and handwheel



Quality
ISO 9001
SAI GLOBAL



Health & Safety
AS 4801
SAI GLOBAL



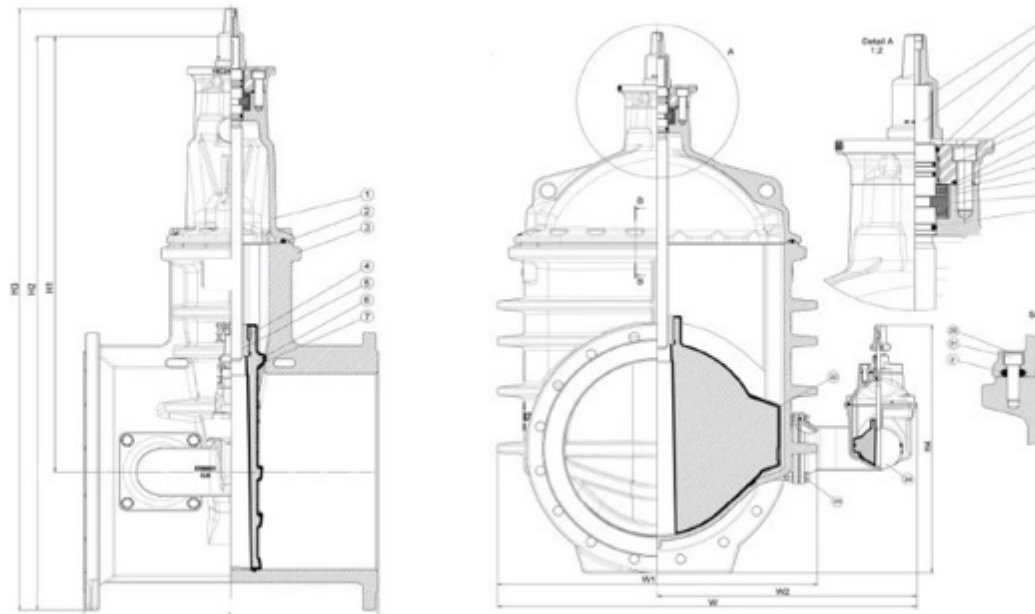
Environment
ISO 14001
SAI GLOBAL



sureflow®

SUREFLOW GATE VALVE, FLANGED LONG, BY-PASS
SS stem, ISO Mounting Flange, EPDM Seal, ACC/CC, DN450-750

2570/42-003

**Component list:**

1. Bonnet	Ductile iron GJS-500-7	14. O-ring	NBR rubber
2. Bonnet gasket	EPDM rubber	15. Bushing	Polyamide
3. Body	Ductile iron GJS-500-7	16. Thrust bearing	CSB
4. Lock pin	Steel	17. Support washer	Stainless steel 1.4057
5. Wedge nut	Brass, DZR CZ132	18. Thrust collar	Stainless steel 1.4057
6. Wedge rubber	EPDM rubber	19. Stem seal	EPDM rubber
7. Wedge core	Ductile iron GJS-500-7	20. Seal	Hot melt glue
8. Stem cap	Ductile iron GJS-500-7	21. Bonnet bolt	Stainless steel A4
9. Stem	Stainless steel 1.4057	22. Wedge shoe	Polyamide
10. Wiper ring	NBR rubber	23. Bolt	Stainless steel A4
11. Gland flange bolt	Stainless steel A4	24. By-pass valve	Ductile iron GJS-500-7
12. Gland flange (1)	Stainless steel/ductile iron		
13. Radial bearing	Bronze CC491K		

Components can be substituted with equivalent or higher class materials without prior notification.
 1) DN450-600: stainless steel; DN750: Ductile iron GJS-500-7

Reference nos. and dimensions:

Sureflow Ref no.	Closing direction	DN mm	Flange Drilling	H1 mm	H2 mm	H3 mm	H4 mm	L mm	W mm	W1 mm	W2 mm	By-pass DN	Theoretical wght/kg
2570-450-42-2540120031	CC	450	AS/NZS 4087 B5	1077	1397	1467	693	660	1130	860	697	100	565
2570-450-42-3540120031	ACC	450	AS/NZS 4087 B5	1077	1397	1467	693	660	1130	860	697	100	565
2570-450-42-2540120039	CC	450	AS/NZS 4087 B5	1077	1397	1467	776	660	1170	860	737	150	582
2570-450-42-3540120039	ACC	450	AS/NZS 4087 B5	1077	1397	1467	776	660	1170	860	737	150	582
2570-450-42-2640120031	CC	450	AS2129 E	1077	1397	1467	693	660	1130	860	697	100	565
2570-450-42-3640120031	ACC	450	AS2129 E	1077	1397	1467	693	660	1130	860	697	100	565
2570-450-42-2640120039	CC	450	AS2129 E	1077	1397	1467	776	660	1170	860	737	150	582
2570-450-42-3640120039	ACC	450	AS2129 E	1077	1397	1467	776	660	1170	860	737	150	582
2570-500-42-2540120031	CC	500	AS/NZS4087 B5	1105	1457	1527	701	710	1130	860	697	100	605
2570-500-42-3540120031	ACC	500	AS/NZS4087 B5	1105	1457	1527	701	710	1130	860	697	100	605
2570-500-42-2540120039	CC	500	AS/NZS 4087 B5	1244	1457	1527	783	710	1170	860	737	150	622
2570-500-42-3540120039	ACC	500	AS/NZS 4087 B5	1244	1457	1527	783	710	1170	860	737	150	622
2570-600-42-2540120031	CC	600	AS/NZS 4087 B5	1244	1656	1726	761	785	1250	969	797	100	830
2570-600-42-3540120031	ACC	600	AS/NZS 4087 B5	1244	1656	1726	761	785	1250	969	797	100	830
2570-600-42-2540120039	CC	600	AS/NZS 4087 B5	1244	1656	1726	843	785	1290	969	807	150	847
2570-600-42-3540120039	ACC	600	AS/NZS 4087 B5	1244	1656	1726	843	785	1290	969	807	150	847
2570-600-42-2640120031	CC	600	AS2129 E	1244	1656	1726	761	785	1250	969	797	100	830
2570-600-42-3640120031	ACC	600	AS2129 E	1244	1656	1726	761	785	1250	969	797	100	830
2570-600-42-2640120039	CC	600	AS2129 E	1244	1656	1726	843	785	1290	969	807	150	847
2570-600-42-3640120039	ACC	600	AS2129 E	1244	1656	1726	843	785	1290	969	807	150	847

The designs, materials and specifications shown are subject to change without notice due to the continuous development of our product program.

SUREFLOW GATE VALVE, FLANGED LONG, BY-PASS
SS stem, ISO Mounting Flange, EPDM Seal, ACC/CC, DN450-750

2570/42-003

Reference nos. and dimensions:

Sureflow ref no.	Closing direction	DN mm	Flange drilling	H1 mm	H2 mm	H3 mm	H4 mm	L mm	W mm	W1 mm	W2 mm	By-pass DN	Theoretical Wght.Kg
2570-750-42-254012C039	CC	750	AS/NZS 4087 B5	1698	2196	2268	987	950	1658	1254	1031	150	2547
2570-750-42-354012C039	ACC	750	AS/NZS 4087 B5	1698	2196	2268	987	950	1658	1254	1031	150	2547
2570-750-42-264012C039	CC	750	AS 2129 E	1698	2196	2268	987	950	1658	1254	1031	150	2547
2570-750-42-364012C039	ACC	750	AS 2129 E	1698	2196	2268	987	950	1658	1254	1031	150	2547

The designs, materials and specifications shown are subject to change without notice due to the continuous development of our product program.

**SUREFLOW RESILIENT SEAT GATE VALVE OS&Y PN16****2570/96**

Face to face dimension to AS 2638.2

Flange to AS 4087, drilling to AS 4087 B5 or AS 2129 Table E and raised face

Use:

- For water, sewage and neutral liquid applications
 - Valve designed for use up to 70°C
 - Where applicable; for AS 4020 compliance, max temp = 40°C
- Note: Always observe pipe material recommended operating temperatures

Tests:

- Hydraulic test to AS 2638.2:
 - Seat: 17.6 bar
 - Body: 24 bar
 - Operating torque test



Quality
ISO 9001
SAI GLOBAL



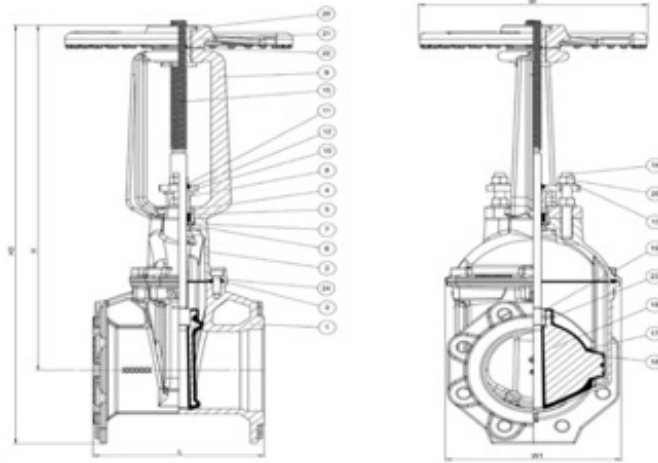
Health & Safety
AS 4801
SAI GLOBAL



Environment
ISO 14001
SAI GLOBAL



Australian
Standard
AS2638.2
Lic. SMK02420
SAI Global
WaterMark

SUREFLOW RESILIENT SEAT GATE VALVE OS&Y PN16**2570/96****Component list**

1. Body	Ductile Iron, 500-7 to AS 1831	14. Stud Bolt	Stainless steel A4-70
2. Bonnet	Ductile Iron, 500-7 to AS 1831	15. Stem	Stainless steel - 316
3. Bonnet Gasket	EPDM rubber	16. Wedge Shoe	Polyamide
4. Bushing	DZR Brass - CW602N	17. Wedge Rubber	EPDM - Rubber
5. Stem Seal	NBR - Rubber	18. Wedge Body	Ductile iron 500-7, to AS1831
6. O-Ring	NBR - Rubber	19. Wedge Nut	DZR Brass - CW602N
7. O-Ring	NBR - Rubber	20. Stem Nut	Copper Alloy no. C35330
8. Packing Gland	DZR Brass - CW602N	21. Handwheel	Ductile iron 500-7, to AS1831
9. Yoke	Ductile Iron, 500-7 to AS 1831	22. Washer	Copper alloy no. C83600
10. Gland Follower	Stainless steel - 316	23. Pin	Stainless steel - 316
11. Wiper Ring	NBR 90 Shore A - Rubber	24. Bolt	Stainless steel A4-70
12. Wiper Ring Core	Stainless steel - 316	25. Nut	Stainless steel A4-70
13. Washer	Stainless steel A4-70		

Components can be substituted with equivalent or higher class materials.

Reference nos. and dimensions- Flange drilling to AS 4087 Figure B5 (AS 2129 Table D)

AVK ref. nos.	DN mm	H mm	H3 mm	W mm	W1 mm	L mm	Holes ID mm	Holes nos.	Bolt PCD mm	Weight kg
2570-080-960540120	80	454	527	Ø254	174	203	18	4	146	19
2570-100-960540120	100	473	556	Ø254	195	229	18	4	178	22
2570-150-960540120	150	671	813	Ø356	275	267	18	8	235	46
2570-200-960540120	200	761	925	Ø356	335	292	18	8	292	64
2570-225-960540120	225	957	1141	Ø458	422	305	18	8	325	112
2570-250-960540120	250	970	1171	Ø458	422	330	22	8	356	118
2570-300-960540120	300	1052	1279	Ø458	452	356	22	12	406	150

Reference nos. and dimensions- Flange drilling to AS 2129 Table E

AVK ref. nos.	DN mm	H mm	H3 mm	W mm	W1 mm	L mm	Holes ID mm	Holes nos.	Bolt PCD mm	Weight kg
2570-080-960540120	80	454	527	Ø254	174.1	203	18	4	146	19
2570-100-960640120	100	473	556	Ø254	195	229	18	8	178	22
2570-150-960640120	150	671	813	Ø356	275	267	18	8	235	46
2570-200-960640120	200	761	925	Ø356	275	267	22	8	292	64
2570-225-960640120	225	957	1141	Ø458	422	305	22	12	325	112
2570-250-960640120	250	970	1171	Ø458	422	330	22	12	356	118
2570-300-960640120	300	1052	1279	Ø458	452	356	26	12	406	150

The designs, materials and specifications shown are subject to change without notice due to the continuous development of our product program.

APPENDIX B - QUALITY CERTIFICATIONS

Copies of Quality Certificates are also available from WSAA.

TABLE B1

AVK AUSTRALIA HOLDING PTY LTD– MANAGEMENT SYSTEMS

559A Grand Junction Road, Wingfield, SA	
Quality Systems Standard	ISO 9001:2015
Certification Licence No.	QEC13894
Certifying Agency	SAI-Global
First Date of Certification	30 April 2001
Current Date of Certification	10 February 2021
Expiry Date of Certification	14 February 2024

TABLE B2

AVK VALVES (AHHUI) CO LTD – MANAGEMENT SYSTEMS

Wujiang Industrial Park Hexian Ma'anshan City Anhui China	
Quality Systems Standard	ISO 9001:2015
Certification Licence No.	FM 84039
Certifying Agency	BSI
First Date of Certification	9 July 2004
Current Date of Certification	8 October 2021
Expiry Date of Certification	7 October 2024

TABLE B3

VIADUX PTY LTD– MANAGEMENT SYSTEMS

Campbellfield VIC, Wetherill Park NSW, Molendinar QLD	
Quality Systems Standard	ISO 9001:2015
Certification Licence No.	228-Q-4
Certifying Agency	GCC
First Date of Certification	4 September 2017
Current Date of Certification	31 August 2020
Expiry Date of Certification	3 September 2023

TABLE B4**AVK AUSTRALIA HOLDING LTD – PRODUCT CERTIFICATION**

559A Grand Junction Road, Wingfield, SA. 5013	
Product Standard/Spec.	AS/NZS 2638.2:2011
Certificate No.	SMK02420
Issuing Certification Body	SAI-Global
First Date of Certification	9 May 2000
Current Date of Certification	6 October 2020
Expiry Date of Certification	9 December 2024



CERTIFICATE OF REGISTRATION

This is to certify that:

AVK Australia Holding Pty Ltd

ABN 11 081 236 777

AVK Valves Pty Ltd

ABN 25 615 247 544

AVK Flow Control Pty Ltd

ABN 80 153 707 398

AVK CTS Pty Ltd

Trading as Complete Tapping Service

ABN 59 621 126 207

AVK Wang Pty Ltd

ABN 29 605 784 343

AVK Currumbin Pty Ltd

ABN 24 615 602 250

559A Grand Junction Road Wingfield SA 5013 AUSTRALIA

(Refer to Attachment to Certificate of Registration dated 12 February 2021 for additional certified sites)

operates a

QUALITY MANAGEMENT SYSTEM

which complies with the requirements of

ISO 9001:2015

for the following scope

The manufacture, marketing and sale of valves and associated products including stainless steel pipe couplings, tapping saddles and flange off take clamps and the provision of under pressure tapping, line stopping and valve insertion services.

Certificate No: QEC13894

Issued: 12 February 2021

Originally Certified: 30 April 2001

Expires: 14 February 2024

Current Certification: 10 February 2021

Frank Camasta
Global Head of Technical Services
SAI Global Assurance



WWW.JAS-ANZ.ORG/REGISTER

Registered by:

SAI Global Certification Services Pty Ltd (ACN 108 716 669) 680 George Street Sydney NSW 2000 Australia with SAI Global Pty Limited 680 George Street Sydney NSW 2000 Australia ("SAI Global") and subject to the SAI Global Terms and Conditions for Certification. While all due care and skill was exercised in carrying out this assessment, SAI Global accepts responsibility only for proven negligence. This certificate remains the property of SAI Global and must be returned to SAI Global upon its request. To verify that this certificate is current please refer to SAI Global On-Line Certification register at <http://register.saiglobal.com/>





Certificate of Registration

质量管理体系 - ISO 9001:2015

兹证明：
埃维柯阀门（安徽）有限公司
91340500730038975J
中国
安徽省
马鞍山市
和县
乌江工业园区
邮编：238251

AVK Valves (Anhui) Co., Ltd.
Wujiang Industrial Park
He County
Ma'anshan
Anhui
238251
China

持有证书：**FM 84039**

并运行符合 ISO 9001:2015 要求的质量管理体系，认证范围如下：

用于供水、污水处理、消防和供气的阀门及其附件的制造。
The manufacture of valves and accessories for water supply, sewage treatment, firefighting and gas supply.

BSI代表：


Chris Cheung, 亚太地区 合规风险主管

首次发证日期：2004-07-09

生效日期：2021-10-08

最新发证日期：2021-09-14

有效期至：2024-10-07

Page: 1 of 1



...making excellence a habit.™

此证书以电子版方式发放，所有权属BSI并受合同条款的约束。

可以 [在线](#) 查询电子证书的有效性

打印的证书可以通过网站 <http://www.bsi-global.com/ClientDirectory> 或者致电 +86 10 8507 3000 查询。本证书信息亦可在国家认证认可监督管理委员会官方网站 (www.cnca.gov.cn) 上查询。

关于证书范围及 ISO 9001:2015 要求的适用性的进一步说明请咨询BSI。

获证组织必须定期接受监督审核并经审核合格此证书方继续有效。

此证书只在提供完整正本时才有效。

信息查询及联系方式：BSI, Kitemark Court, Davy Avenue, Knowlhill, Milton Keynes MK5 8PP. 电话：+44 345 080 9000

BSI保证英国有限公司，注册地英国，注册号7805321，地址：389 Chiswick High Road, London W4 4AL, UK

英标管理体系认证（北京）有限公司 北京市建国门外大街甲24号东海中心2008室 邮编：100004 电话：+86 10 85073000

BSI集团公司成员。

CERTIFICATE OF REGISTRATION



THIS IS TO CERTIFY THAT

Viadux Pty Ltd (A Reece Group Company)

ABN:84 004 097 090 & 75 087 415 745

209-221 Barry Road, Campbellfield VIC 3061 Australia
21 Frank Street Wetherill Park NSW 2164 Australia
27-29 Industrial Avenue Molendinar QLD 4214 Australia

CONFORMS TO THE REQUIREMENT OF

**QUALITY MANAGEMENT SYSTEM
ISO 9001:2015**

FOR THE FOLLOWING SCOPE

Design, source, supply and distribution of water network products

Certificate Number: 228-Q-4
Original Certificate Date: 04/09/2017
Certificate Issue Date: 31/08/2020
Certificate Expiry Date: 03/09/2023

M. Sharifi
Mousa Sharifi-Certification Manager
Global Compliance Certification Pty Ltd



Global Compliance Certification Pty Ltd Level 17, 40 Mount St, North Sydney NSW 2060 www.gccertification.com
Global Compliance Certification is accredited by Joint Accreditation System of Australia and New Zealand (JAS-ANZ)
This certificate remains the property of Global Compliance Certification and must be returned upon its request.
This certificate is only valid in connection with the successful performance of the surveillance audits.

A copy of the product schedule can be obtained from WSAA, Viadux or downloaded from the SAI-Global website at the following link:

<https://register.saiglobal.com/client/schedule.aspx?setID=SF01&custID=AS010846&appCertNo=SMK02420>



STANDARDSMARK LICENCE

SAI Global hereby grants:

AVK Australia Holding Pty Ltd

ABN 11 081 236 777

559A Grand Junction Road, Wingfield, SA 5013, Australia

StandardsMark Licence

Manufactured to:

**AS/NZS 2638.2:2011 - Gate valves for waterworks purposes - Resilient seated
& AS/NZS 2638.1:2011 - Gate valves for waterworks purposes - Metal seated**

"the StandardsMark Licensee" the right to use the STANDARDSMARK as shown below only in respect of the goods described and detailed in the Schedule which are produced by the Licensee or on behalf of the Licensee* and which comply with the appropriate Standard referred to above as from time to time amended. The Licence is granted subject to the rules governing the use of the STANDARDSMARK and the Terms and Conditions for certification and licence. The Licensee covenants to comply with all the Rules and Terms and Conditions.

Licence No: SMK02420

Issued : 6 October 2020

Expires : 9 December 2024

Originally Certified : 9 May 2000

Current Certification : 6 October 2020

Heather Mahon
General Manager Technical Services
SAI Global Assurance



* For details of manufacture, refer to the licensee

The STANDARDSMARK is a registered certification trademark of SAI Global Pty Limited (A.C.N. 050 644 642) and is issued under licence by SAI Global Certification Services Pty Limited (ACN 108 716 669) ("SAI Global") 680 George Street, Sydney NSW 2000, GPO Box 5420 Sydney NSW 2001. This certificate remains the property of SAI Global and must be returned to SAI Global upon its request. Refer to www.saiglobal.com, for the list of product models.



APPENDIX C - SUPPLIER CONTACTS**AVK AUSTRALIA HOLDING PTY LTD**

559A Grand Junction Road, Wingfield, SA

Tel: (08) 8368 0900

Email: enquiries@avkau.com.au

Website: <https://www.avkcivil.com.au/en-au>

VIADUX PTY LTD**Townsville**

19-25 Corporate Crescent, Garbutt, QLD, 4814

Tel: (07) 4725 5940

Email: cct.sales@viadux.com.au

Gold Coast

27 Industrial Avenue, Molendinar, QLD, 4214.

Tel: (07) 5501 1400

Email: ccg.sales@viadux.com.au

Sydney

21 Frank Street, Wetherill Park, NSW. 2164

Tel: (02) 9794 3400

Email: ccs.sales@viadux.com.au

Melbourne

209 Barry Road, Campbellfield, VIC, 3061

Tel: (03) 9309 9133

Email: ccm.sales@viadux.com.au

Adelaide

20 Taminga Street, Regency Park, S.A. 5010

Tel: (08) 8440 5980

Email: cca.sales@viadux.com.au

Perth

29 Colin Jamieson Drive, Welshpool, W.A. 6106

Tel: (08) 9334 8100

Email: ccp.sales@viadux.com.au

Darwin

9 McCourt Road, Yarrowonga, N.T. 0803

Tel: 1300 842 389

Email: ccd.sales@viadux.com.au

Website: <https://www.viadux.com.au/>



Melbourne Office

Level 8, Suite 8.02
401 Docklands Drive
Docklands VIC 3008

Sydney Office

Level 9 420 George Street
Sydney NSW 2000
GPO Box 915
Sydney NSW 2001

P +61 (0) 3 8605 7666
email: info@wsaa.asn.au

www.wsaa.asn.au